



DEFENSE LOGISTICS AGENCY

AMERICA'S COMBAT LOGISTICS SUPPORT AGENCY



Parachute Requirements Demand and Supply Profiles

26 October 2012
Tim Morefield



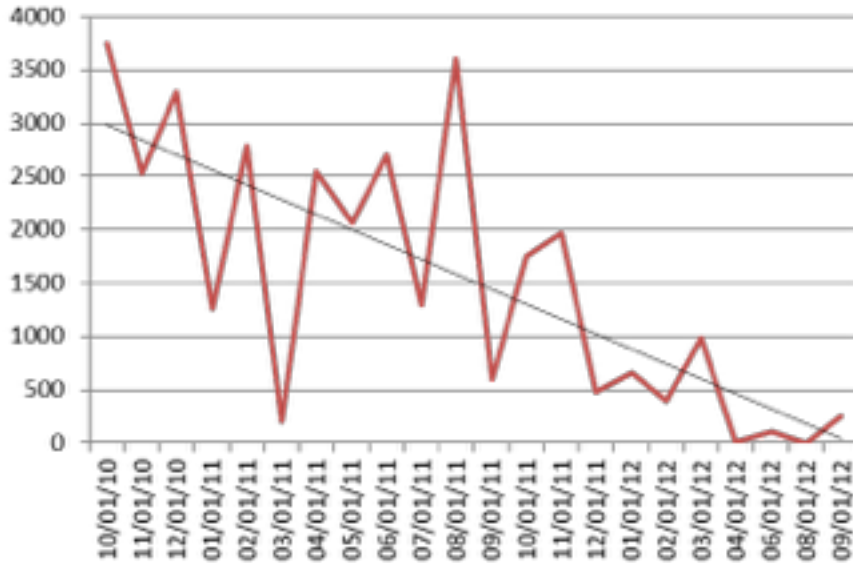
Background

- The following charts depicts the ‘snap-shot’ as of today of what we anticipate our future requirements to be...(non-binding projections)
- Items were transferred to DLA from the Army, in poor support status, causing Army users to inflate demand
- Big unknown is how and when Army will alter their demand signal to DLA to deplete their internal stock levels
 - Declining Army demand will impact DLA orders (quantity and timing) to industry



Item 01-592-1202 PARACHUTE HIGH-VELO

Demand Profile:



Projected Monthly Demand: 30

Supply Profile:

DLA On Hand:	40,339
DLA Contracts Due:	7,054
DLA PRs Due:	0
Army On Hand:	19,347

Anticipated Future DLA Orders:

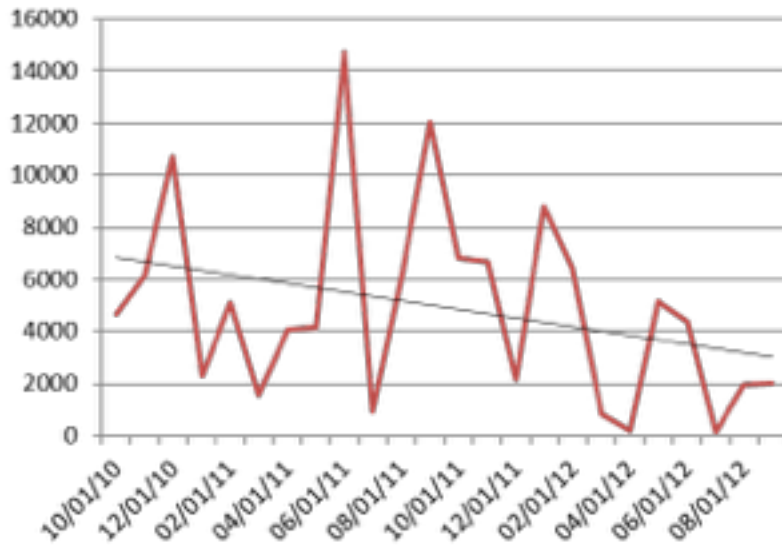
None foreseen at this time

Non-binding Projections



Item 01-547-0401
PARACHUTE,LOW-VELOC

Demand Profile:



Projected Monthly Demand: 3,574

Supply Profile:

DLA On Hand:	32,387
DLA Contracts Due:	25,614
DLA PRs Due:	2,000
Army On Hand:	24,603

Anticipated Future DLA Orders:

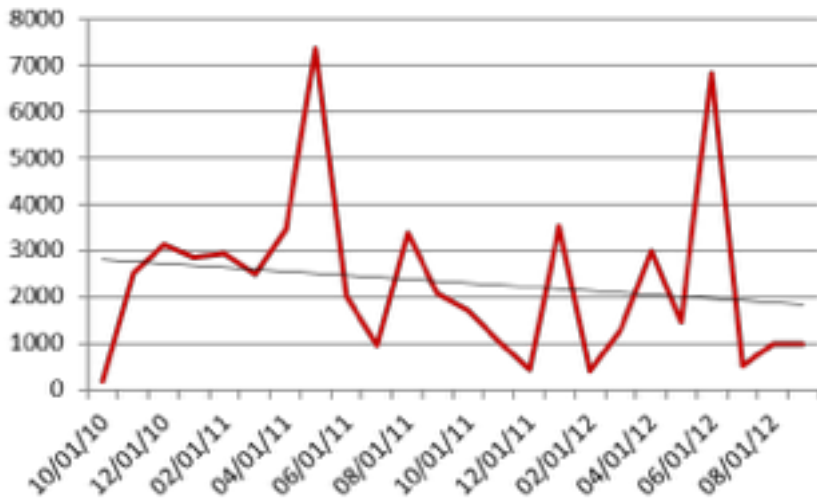
Current PR for 2,000
 Anticipate future PRs for ~2,000 every 3 months

Non-binding Projections



Item 00-753-3928
 PAD,ENERGY DISSIPAT

Demand Profile:



Projected Monthly Demand: 1,449

Supply Profile:

DLA On Hand:	11,186
DLA Contracts Due:	32,905
DLA PRs Due:	0
Army On Hand:	10,859

Anticipated Future DLA Orders:

Anticipate future PR in 6/2013 for ~4,600, and PRs every 3 months afterwards for ~ 4,300

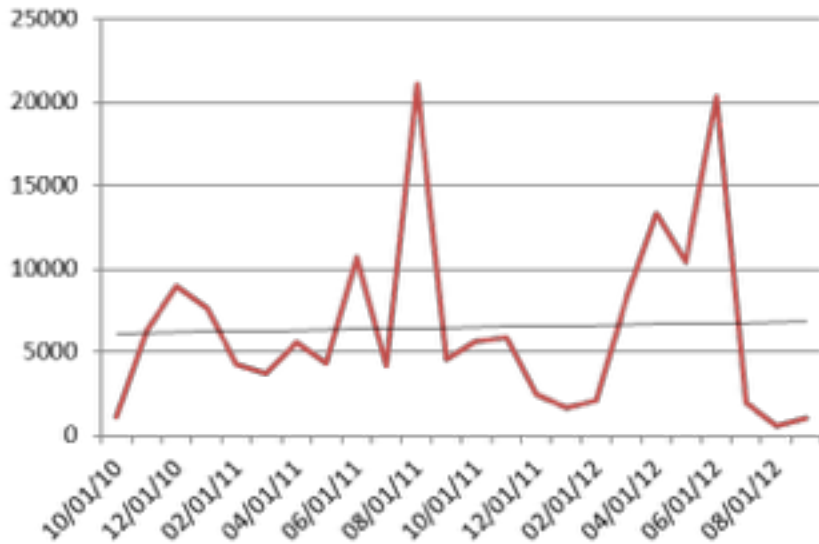
Non-binding Projections



Item 01-342-5913

SKID,BOARD

Demand Profile:



Projected Monthly Demand: 4,527

Supply Profile:

DLA On Hand:	23,140
DLA Contracts Due:	8,916
DLA PRs Due:	38,181
Army On Hand:	31,466

Anticipated Future DLA Orders:

Current PRs for total of 38,181

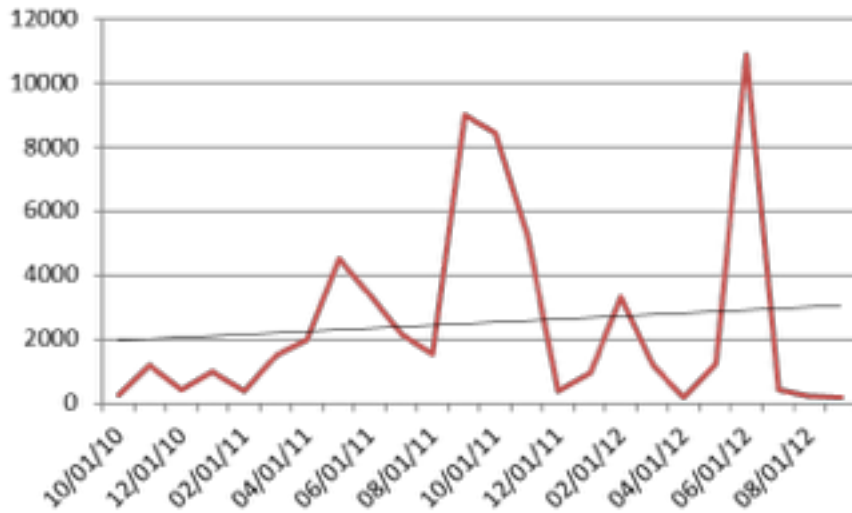
Anticipate next PR in 03/2013 and every 3 months afterwards for ~ 13,500

Non-binding Projections



Item 01-551-5433 CROSS PARACHUT,LCLA

Demand Profile:



Projected Monthly Demand: 1,471

Supply Profile:

DLA On Hand:	23,978
DLA Contracts Due:	28,711
DLA PRs Due:	0
Army On Hand:	21,864

Anticipated Future DLA Orders:

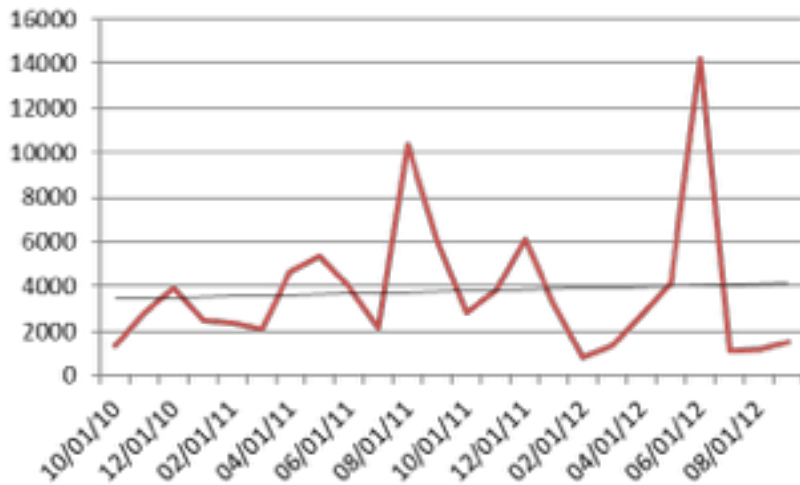
Anticipate next PR in 06/2013 for ~1,500 and every 3 months afterwards for ~ 4,400

Non-binding Projections



Item 01-523-7246 LOW COST CONTAINER

Demand Profile:



Projected Monthly Demand: 2,681

Supply Profile:

DLA On Hand:	45,519
DLA Contracts Due:	26,417
DLA PRs Due:	0
Army On Hand:	20,954

Anticipated Future DLA Orders:

Anticipate next PR in 12/2012 for ~1,900 and every 3 months afterwards for ~ 3,200

Non-binding Projections

DEFENSE LOGISTICS AGENCY

AMERICA'S COMBAT LOGISTICS SUPPORT AGENCY



WARFIGHTER SUPPORT

STEWARDSHIP EXCELLENCE

WORKFORCE DEVELOPMENT