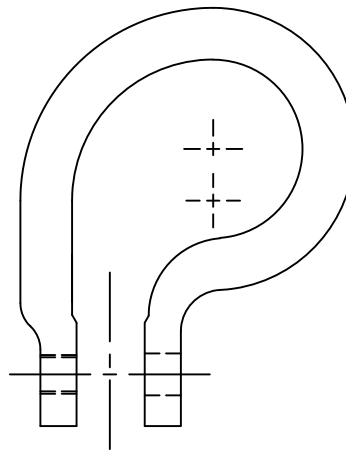
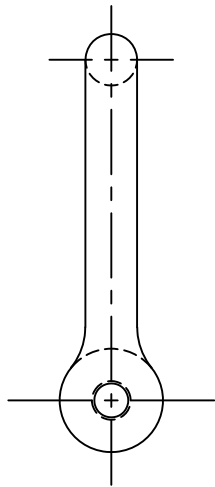



PS PART NO.	DESCRIPTION	FINISH
PS70085-1	1/2' CLEVIS ASSEMBLY	PHOSPHATE COAT
PS70085-3	1/2' CLEVIS ASSEMBLY	CAD PLATE



ADAPTED 1/7/98, REVISED (A) 1/11/05, REVISED (B) 4/29/10, REVISED (C) 3/28/15, REVISED (D) 2/23/24.

<b>Parachute Industry Association</b>  <small>DISTRIBUTION STATEMENT: All Rights Reserved. No part of this publication may be reproduced without written permission from the Parachute Industry Association. Additional copies may be purchased on-line from the PIA Store at: WWW.PIA.COM</small>	<b>Title</b>  CLEVIS, TIE DOWN, AIR DELIVERY TYPE II <b>PREVIEW</b>	<b>PIA Standard</b>
		<b>PS70085</b>
<b>Procurement Specification</b> PIA-H-7195	<b>Adapted From:</b> MS70085 (D)	Sheet 1 of 4